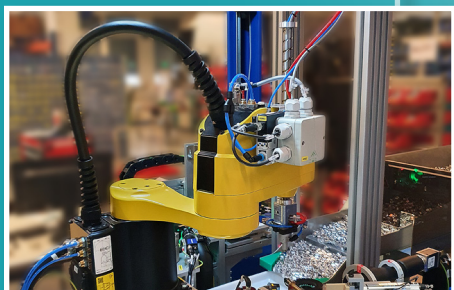
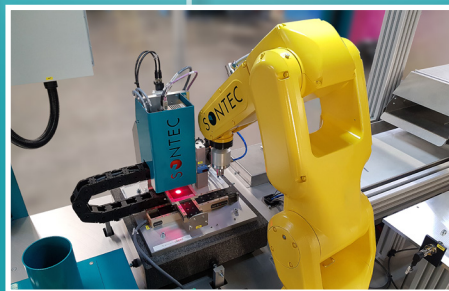


SONFLEX

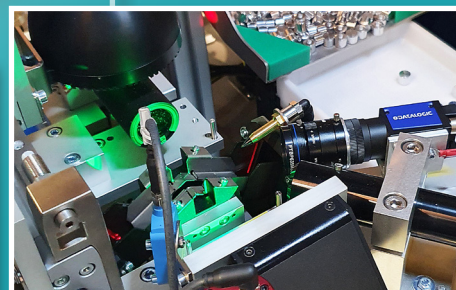
TESTING & ASSEMBLY MACHINE



Automatic machine with high flexibility



Scara and 6-axis robot



Up to four testing & assembly stations

SONTEC
quality for success

SONFLEX

TESTING AND ASSEMBLY OF SERIAL PARTS

The SONFLEX automatic testing and assembly machine uses a robot to load the series parts into the various testing and assembly stations. Subsequently, the parts are sorted.



INSPECTION TECHNOLOGIES

- ✓ Optical inspection (2D/3D)
- ✓ Laser measurement sensors
- ✓ Tactile measurement
- ✓ Air measuring rings ...and more



ASSEMBLY TECHNOLOGIES

- ✓ All assembly technologies can be flexibly integrated



Operation

Swivelling terminal with touch screen, keyboard & mouse



Products

Parts of all types up to 100x100x100mm



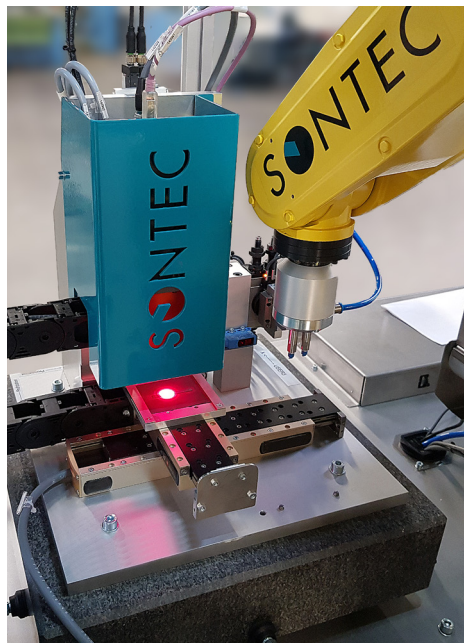
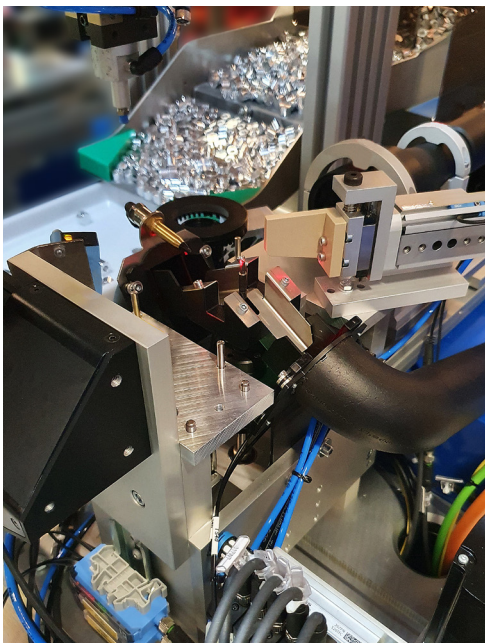
Performance

Maximum output up to 50 pcs/min



Benefits

Very high flexibility, process extension possible



SONTEC AG
Turbistrasse 27
6280 Hochdorf



+41 41 910 55 22



info@sontec.ch



www.sontec.ch

